



TerraBuilder®

Version 6 Release Notes

Information contained in this document is subject to change without notice and does not represent a commitment on behalf of Skyline Software Systems Inc. No part of this document may be reproduced or transmitted in any form or by any means, electronic or mechanical, including photocopying without the written permission of Skyline Software Systems Inc.

Copyright © 2010 Skyline Software Systems Inc. All rights reserved.

Skyline, SkylineGlobe, the Skyline logo, TerraExplorer, TerraExplorer Pro, TerraDeveloper, TerraBuilder, TerraGate, and the TerraExplorer Pro logo are trademarks of Skyline Software Systems Inc.

All other trademarks are the property of their respective holders.

Trademark names are used editorially, to the benefit of the trademark owner, with no intent to infringe on the trademark.

Protected by U. S. patents 7551172, 6111583, 6433792, 6496189, 6704017. Other patents pending.

4506 Daly Drive, Suite 100 Chantilly, VA 20151 USA

Tel: 703.378.3780 Fax: 703.378.3760

w w w . S k y l i n e G l o b e . c o m

New MPT Format

- New MPT v3.0 features support for new **internal** formats:

Imagery Sources

- New improved JPEG - For basic raster imagery that does not require transparency.
- PNG-24 - For high-quality images.
- PNG-8 - For schematic maps using less than 256 colors.

Elevation Sources

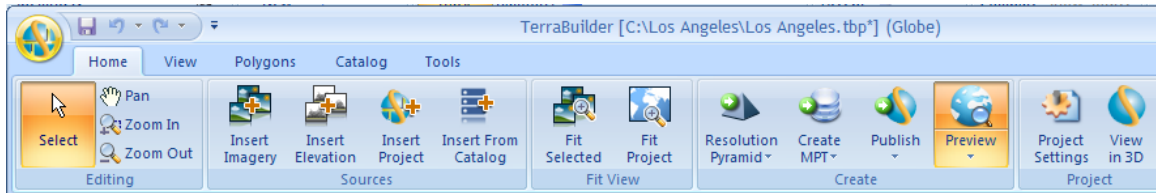
- New improved JPEG - For standard resolution.
- PNG-16 - For high resolution, best for LIDAR data.
- PNG 16.8 - For very high resolution. Each individual MPT layer can be saved in the optimal format for its data type.

Improved Performance

- When using the MPT v3.0 format, MPT has replaced MPU as the layer's cache format providing the following advantages:
 - New algorithm for MPT resolution pyramid creation requires less time than previously used MPU files.
 - The new format's use of Fusers' architecture enables users to utilize multi-core and multi-servers resources for MPT resolution pyramid generation.
 - Use of MPT format for source resolution pyramids speeds up MPT project creation by enabling data from the source MPT to be copied directly to the project MPT.
 - The Direct Connect project now reads the cached layers from the MPT and sends the non-cached layers to the fusers.
- Processing time can be reduced by displaying specific sources (i.e. whose processing would otherwise be slow) in Color mode, even when the rest of the project is displayed in Normal or Fast mode.

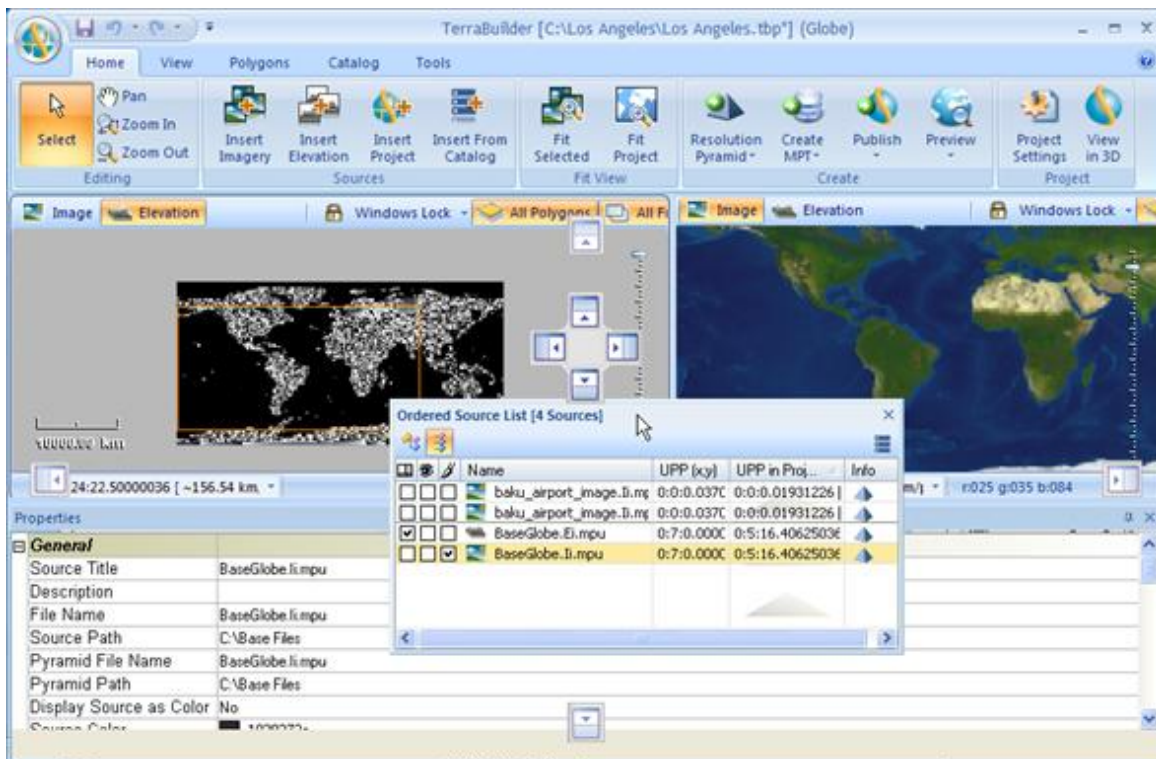
Productivity Enhancements

- **Improved User Interface** - Our new and improved user interface is designed to help you quickly find the commands that you need to complete a task:
 - Menus and toolbars have been replaced by a Ribbon that organizes all commands in easily-accessible, intuitive groups, which are collected together under tabs.
 - A customizable Quick Access toolbar makes the commands you most frequently use always available to you.
 - Expanded tool tips help you find the command you are looking for by offering meaningful, detailed descriptions of features.



TerraBuilder Ribbon - Home Tab

- **Window Layout Options** - At any time during a TerraBuilder session, the Source List and Properties Sheet can be repositioned on the screen so that you can create the application layout that is most convenient for you.



Floating/Docking Windows

- **Source Windows**
 - New scale bar - Indicates the scale relationship between the source representation in the Working Window and the ground units it represents. Bar units can be in kilometers or feet.
 - New zoom bar - Offers an additional method of adjusting the resolution.
- **AutoRecover** - TerraBuilder automatically creates a backup copy of your project, every five minutes. If your computer stops responding, or you lose power unexpectedly, the AutoRecover file is opened the next time that you start TerraBuilder.
- **Undo** - Up to 20 actions can be undone and redone in TerraBuilder.
- **TLT File Creation** - The process of creating Tile Text files and inserting them in a project has been incorporated into the Insert Source workflow.
- **Source Display** - Sources are displayed in the available resolutions even without pyramid creation.
- **New Export Formats** - Polygons can be exported to .pol and .shp file formats.

- **New projection system** – Support for Well Known Text allows easier definition of any custom coordinate system while still keeping high-level dialogs for common systems.

New TerraCatalog

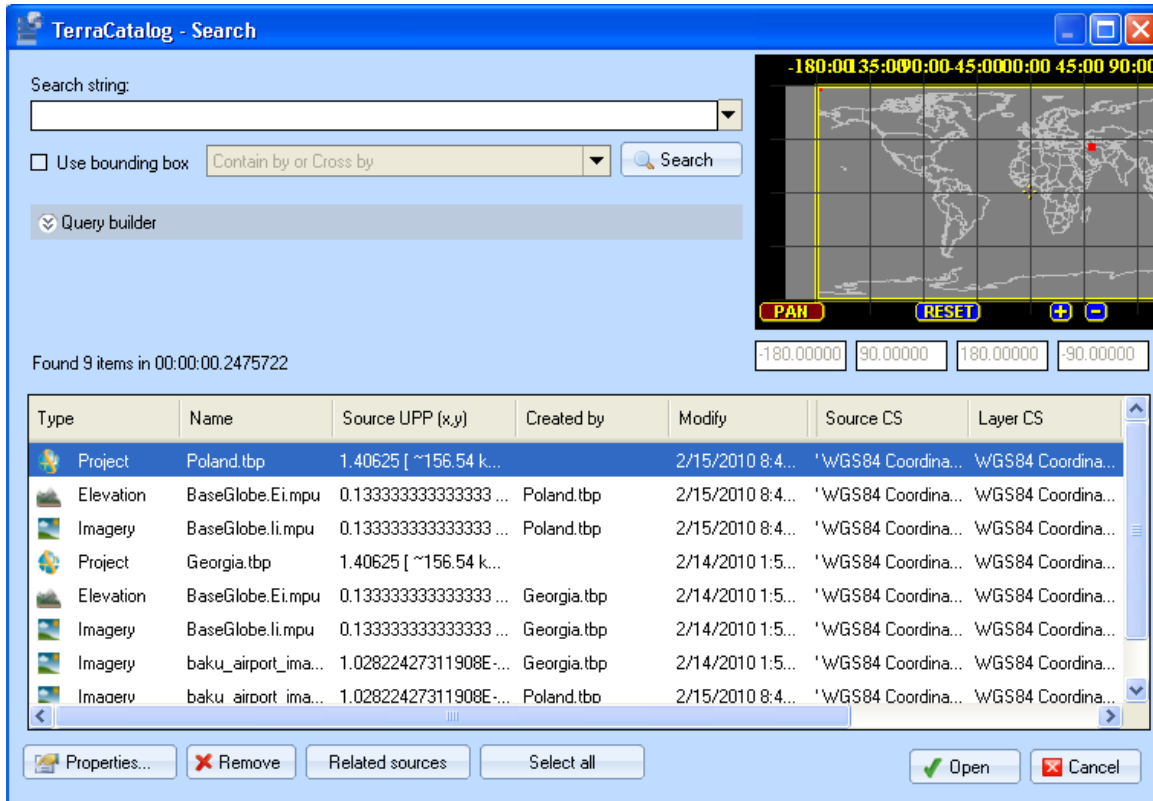
TerraCatalog is a catalog database that stores, organizes and manages connections to imagery and elevation sources and projects, located in storage files or on remote servers. When TerraBuilder is connected to TerraCatalog, the catalog can easily be browsed and the required geographic data inserted into a TerraBuilder Project. All modifications to a source can be updated to the catalog, overriding the existing catalog layer or creating a new layer as required. All changes to TerraCatalog sources trigger notification messages to individuals working with these sources, promoting efficient project collaboration.

Main Capabilities:

- Lists and maps connections to imagery and elevation sources and projects, located in storage files or on remote servers.
- Import of folders and files containing imagery and elevation raster and projects (TBP files).
- Search tools enable searches by geographical coordinates or by any data in any of the metadata elements.
- Sources and projects can be uploaded to the catalog directly from TerraBuilder.
- Sources and projects can be inserted in your project from TerraCatalog.
- Ability to manage users and sources.
- Enables collaboration by allowing each database developer to work on his/her section of the project while viewing “live updates” of all modifications and progress by other team members.

Two Modes:

- **Connect to Catalog** (only) - You can browse the catalog and insert/import a layer found in the catalog in your project. Any modifications you make to this layer within your project have no affect on the catalog layer.
- **Bind Project** (includes Connect to Catalog) - Layers you create or modify within your project can be updated to the catalog.



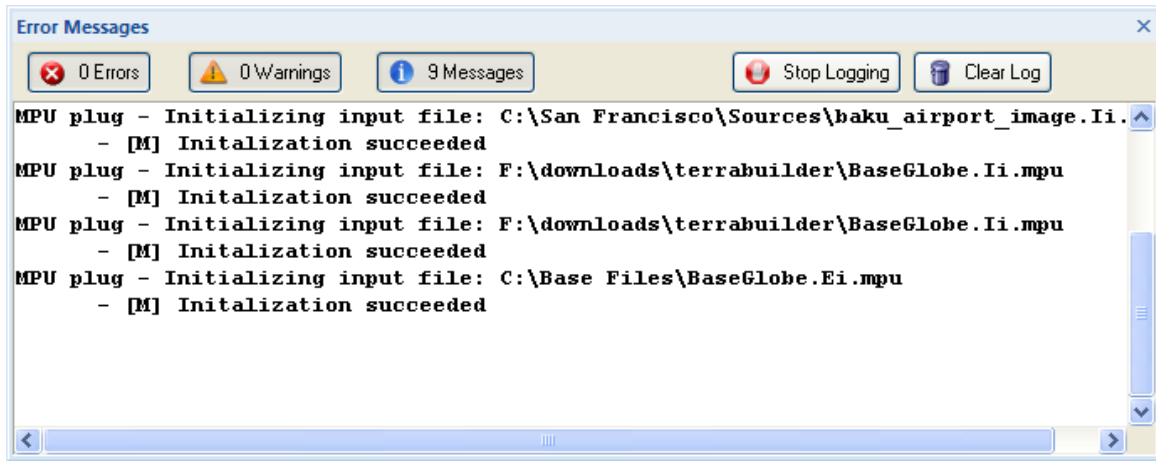
TerraCatalog Search Dialog Box

New Import Data Formats and Capabilities

- A DirectConnect (TBP) project can be added as a source to a project.
- An MPT project can be added as a source to a project.
- New image import formats:
 - Gdal Img (*.img)
 - No Stream Bitmap (*.bmp)
 - No Stream Jpeg (*.jpg)
 - No Stream Gif (*.gif)
 - ArcSDE Raster Server
- New elevation import formats
 - Gdal Img
 - No Stream Bitmap
 - No Stream Jpeg
 - No Stream Gif
- Import from additional servers:
 - TerraGate Server
 - ArcSDE Raster Server
- Import from TerraCatalog

New Errors, Messages and Warnings Log

The TerraBuilder log records and displays messages, warnings and errors to help you keep track of events associated with core functionality and troubleshoot any TerraBuilder issue.



TerraBuilder Log

Updated External Libraries

- GDAL 1.6.2.
- LizardTech GeoExpress 7.0.0 (with MrSID generation three support).

Localization

- By separating all resources from the source code, TerraBuilder simplifies the translation of user interface text and graphics.

System Requirements

Operating System - Windows XP/Vista/7

System Memory - 512MB RAM (1024MB or more recommended)

Video Card - 64MB of memory (128MB or more recommended)

Internet Connection - Broadband connection (recommended)

Browser - Microsoft Internet Explorer 6 or higher should be installed on machine